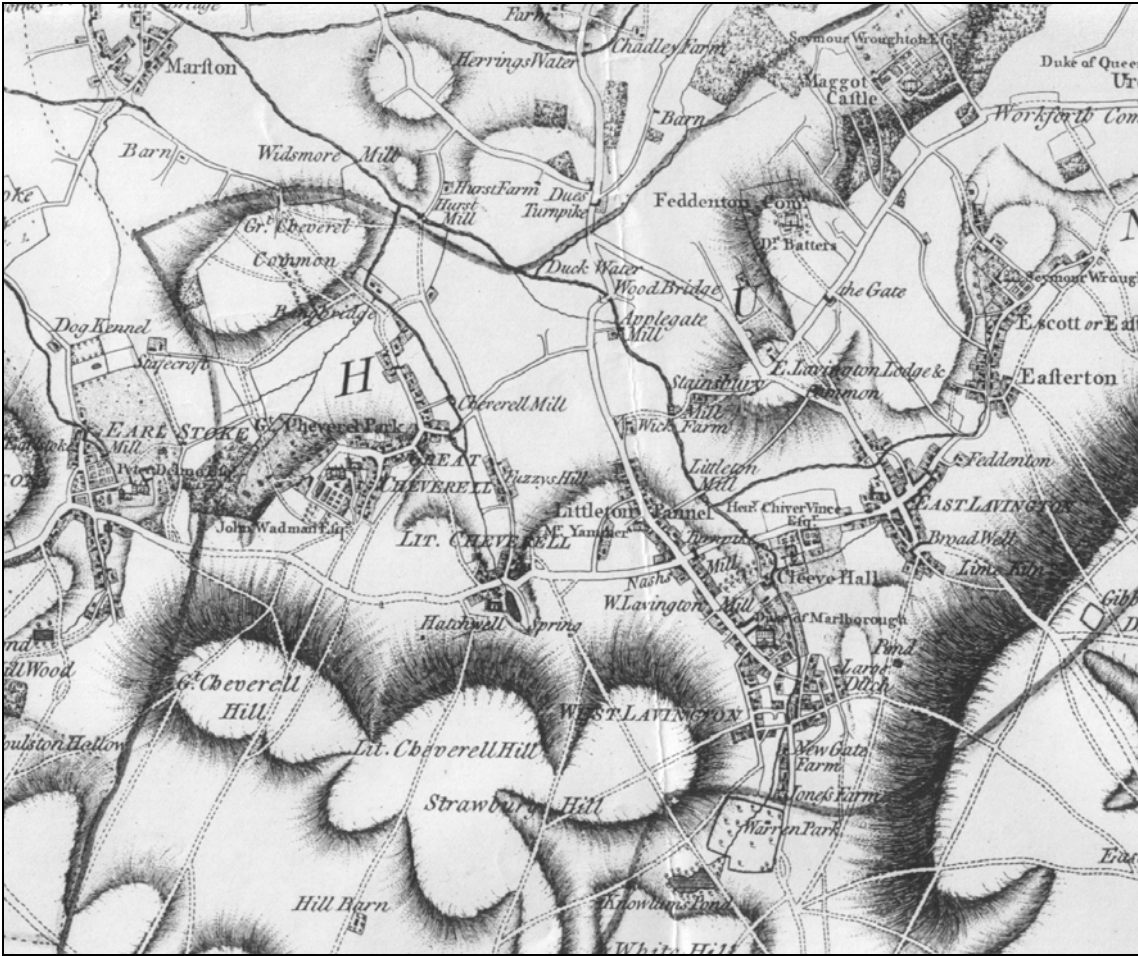


Your Parish Plan was prepared by:



Left to right: David Nichols, Lynda Wearn, Pauline Jenkinson, Rosalind Ambler, Louise George, Stella Wilson, Debbie Deimert, Anna Spear



An 18th century map of Great Cheverell

Welcome to the **Great Cheverell Parish Plan**.

This document reflects the views of the whole community on how they want their village to go forward.

The purpose of a Parish Plan is to:

- Reflect the views of all sections of the community;
- Identify which features and local characteristics people value;
- Identify local problems and opportunities;
- State how residents want the community to develop in the future;
- Produce a plan of action to achieve this vision.

The Parish Plan scheme was set up by the Countryside Agency, which provided a grant that, together with locally raised funds, has paid for the research. This scheme has now been wound up, and Great Cheverell was among the last villages to obtain this funding. The application for funding had to be made rapidly, following an initial village meeting to explain the purpose of preparing such a Plan at which a number of volunteers came forward to sit on the Parish Plan Steering Group. The Group is proud to state that none of these initial volunteers has fallen by the wayside since that initial meeting in May 2004.



A classic summer scene – the church fete at the Old Rectory

How the Plan was researched

At the original village meeting a representative from Community First (who give support to small communities including the preparation of Parish Plans) invited those present to say what they did and didn't like about Great Cheverell, and what their main concerns were.

This naturally only flushed out the opinions of those present, so a questionnaire was prepared and distributed, inviting every resident old enough to understand the questions to submit their views.

205 questionnaires were completed, which represents a response of approximately 40% of the villagers.



The shop is popular



People think highly of the Bell

The findings and recommendations within this Plan are largely, but not entirely, based on the questionnaire. As all the steering committee live in the village, opinions were also gathered throughout the research period through day to day encounters, and the planning aspect was looked into when preparing the village appraisal in 1995 and during consultation for new developments in the village.



Holy Trinity School

Holy Trinity School also participated, with a project that asked local children what they liked, or disliked, about the village.

It was heartening to learn that our younger residents love where they live.

Great Cheverell is the best village in the world

Holy Trinity Pupil, Summer 2005

GREAT CHEVERELL

The Past

Great Cheverell has been in existence since Saxon times, although there may have been an earlier Roman settlement. In the 15th century the Cheverell manors formed an endowment for Heytesbury Almshouses, and after that a string of landowners owned most of the village until the last major landowner, Simon Watson-Taylor, sold off his estate and houses came into private ownership.



The Bell, when cartwheels were practical rather than decorative

The Present



The High Street

Today, the village has a population of 588.

Great Cheverell's main street is within a conservation area, providing picture postcard prettiness. The downside to this is poor access to most of the public buildings and facilities – the village hall, the post office stores and the public house are all entered via steps, making disabled access difficult, but alterations to the structures are strictly controlled by the conservation rules

There is a nursery school, primary school, small group of business/industrial units, a garage, a post office stores and a church.

It is felt that the village is somewhat lacking in community spirit, with long term residents harking back to days when there were more village activities and associations, and newcomers commenting on the lack of community events. This may be due in part to losing the community hall that used to stand on the playing fields at the top of the village.

The Geography

The Future

There has been an ongoing proposal for a new housing development at the top of the village, that would include a new community hall provided by the developers, and an improved playground. This has been under consideration since the 1980s and has suffered a large number of setbacks. At the time of preparing this Plan, building is expected to start in 2006.

Beyond this, no further expansion of the village is likely to occur, although infill building is still feasible.



Witchcombe Lane development plans



Dawn over Great Cheverell

LEISURE, RECREATION AND CULTURE

The majority of villagers learn about events through News and Views, the parish magazine. It is hoped that the new website will also play a role, particularly with younger members of the community.

A new community centre, with more facilities and disabled access will provide a better venue for activities than those currently available.

Local sports, such as junior football and the skittles team have good support, and two village parties organised by the Parish Plan Steering Committee have been well supported, proving that Great Cheverell in the 21st century has the potential for a much improved community spirit.



Music at The Bell

During the preparation of this plan there has been considerable feedback that people would like more community activities.

How do people know what is happening in Great Cheverell?

Most residents (61% of those questioned) felt well informed about what was going on locally, mainly via News & Views, word of mouth, local press and notice boards

Those currently using News & Views and notice boards should be encouraged to use the website, www.greatcheverell.org.uk to reach a wider audience. Simply e mail details to the address on the site

What is available now, and are residents aware of them?



Lavington Angling Club is in Great Cheverell

Skittles and darts at the pub scored the highest, with good awareness of junior football, bingo, whist, aiki, fellowship group and support from the church.

Cricket at Erlestoke, the Friendship club, theatre group, yoga and book club scored below 30%.

All societies are invited to submit information for inclusion in the website, and to use this in addition to News & Views and notice boards.

The Research Findings

What additional activities do residents want, at what time of day?

image: www.freeimages.co.uk




Demand for daytime activities was modest, with just over 10% of people asking for keep fit, computer studies and gardening activities.

The idea of evening activities was more popular. 40% of respondents would like arts events such as drama, music, and 30% specifically asked for concerts in the church.

The singing quartet Waking the Witch will perform at Great Cheverell's first Rural Arts Wiltshire event on 1st April 2006.

Demand is also there for a youth club, and keep fit. Brownies and scouts, dance, gardening and badminton all had moderate support.

 ArtsNoW logo

Rural Arts Wiltshire have agreed to run a music event, which will take place at the School on April 1st. If this is well supported other productions can be applied for in future.

The Parish Plan Steering Committee are inviting those interested in keep fit, gardening, and other topics to informal gatherings to establish just what they would like, and take forward any ideas that have sufficient support. Meetings will be held in Spring 2006

Where existing clubs have no additional capacity (theatre group, book group) villagers could investigate setting up new groups.

Some activities, including all youth activities, will be harder to get off the ground due to insufficient people being prepared to help.

Offers to help run gardening and book clubs make these a more viable proposition.

Key Objectives

- Gather like-minded people together to set up societies and interest groups.
- Overcome reluctance to get involved with organisation of activities – it is no good waiting for 'them' to do it for you. If you want it, make it happen!

COMMUNITY FACILITIES

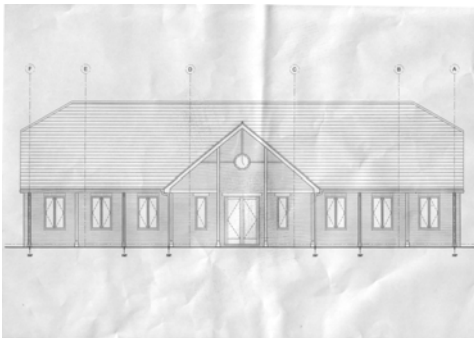
There are four public meeting places in the village. The Bell public house has a large upstairs function room that doubles as the skittle alley and there is a village hall on the High Street. Both these are reached by steps, making them difficult for or unusable by those with mobility problems. The school has a large hall that can be hired, and St Peter's Church is also available for hire for concerts.

When the Community Centre is built the children's play park alongside the football pitch will be refurbished, and a car park created.



The Village Hall

Are residents aware of the facilities available?



The new Community Centre

Awareness of the village hall and pub function room was very high, and both these venues are well used by residents.

The availability of the school hall, however, was not something people knew about, and only 14% of those questioned had actually used this facility.

There was low awareness of the fact that St Peter's could be hired.

Details of how to hire all these venues need publicising, via the notice boards and website, together with contact names, hire rates, and any restrictions that apply.

Other channels that could be used include posters and flyers, information taken home by pupils at Holy Trinity School, the church notice board and the Friendship Group.

Key Objectives

- The Parish Council to produce a Newcomers' Village Welcome Pack, including details of the community facilities, and establish a network of volunteers to monitor the arrival of newcomers, and deliver these packs.

TRANSPORT, TRAFFIC, ROADS & FOOTPATHS

A bus service from Devizes to Trowbridge via Westbury operates through the village, also one to Bath. A service to Salisbury can be caught at the junction with the A361. The local timetable is displayed outside the Post Office, and other timetables are available from the Post Office



Waiting for the school bus

Two thirds of respondents do not use the bus which is largely used by people under 24.

Are the roads and footpaths well maintained and safe?

44% of those questioned were not happy with the condition of the roads and/or footpaths. 34% of people indicated that they would be willing to help maintain footpaths. A number of people attending the first village meeting put themselves forward for footpath maintenance and these names have been passed to the Footpaths Liaison officer on the Parish Council.

The Parish Council needs to continue to identify which roads are causing concern and where appropriate take the matter up with the Highways Agency.

A Path Clearing Day could be set up using volunteers to clear and maintain footpaths, or individuals could take responsibility for specific paths, and this activity be featured on the GC website.

Do people feel in danger as pedestrians, cyclists or riders on the roads?



46% of respondents did feel the Great Cheverell roads presented some danger. Speed of traffic was the major concern, together with heavy goods vehicles, and there is alarm at the prospect of heavy vehicles coming through the village to the new development opposite the school. Haphazard and unsafe parking in the High Street was also a concern, although this can aid in reducing the speed of through traffic.

There is a need for an action group to support the Parish Council in tackling traffic and speeding problems and prepare a plan and/or conduct lobbying at other levels. A meeting will be called to discuss setting an action group, open to all villagers

Key Objectives

- Utilise the voluntary services that have been offered to maintain footpaths
- Form a Traffic Action Group
- Publicise methods that should be used by individuals to report road maintenance problems

RETAIL SERVICES

Great Cheverell has a Post Office stores that also offers a dry cleaning and other services, public house, and garage, all of which enjoy a high level of local support. 90% of respondents used the Post Office, 87% the shop, 82% the pub and 61% the garage.

Both the shop and the pub present access problems, being reached by steps.



Kyte's Garage

A milkman, Michael Bulling, delivers milk and some other groceries including bread, potatoes, cheese, orange juice. These deliveries take place on Mondays, Wednesdays and Fridays.

A grocery van, D & D Coxhead, makes daily deliveries including milk from Littleton Pannell.

How can usage of these facilities be increased to ensure their survival?



Business owners need to be consulted, and ideas probed, such as third party shopping for those who find access difficult.

At present, all businesses do their utmost to assist customers who have problems with access.

Deliveries are made by I & L Smith of Cheverell Stores to those who are unable to get to the shop. There is potential to increase this service

Speak to business proprietors, and continue to question villagers on their needs in this area

Do residents have problems using retail services outside the village, due to transport problems?

A small percentage said yes to this question. If these people can be identified they may wish to participate in the Devizes Link Scheme that provides transport for those who need it.

Seek out those who need transport, and increase participation in the Link Scheme.

The Research Findings

Would residents be interested in having groceries delivered via a shopping group?

9% of respondents found this an attractive idea.

Establish whether Cheverell Stores would be willing to support such a scheme, and if so confirm interest from potential participants.

Do people use online supermarket shopping with delivery services?

22% of respondents did use these services, mainly younger people. This may indicate that there is potential for a village internet facility, to enable people currently unable to use this facility and help those unfamiliar with internet use.

Interested parties without internet access need to be identified. The Countryside Agency is currently reviewing an initiative to establish rural internet facilities. The status of this review should be investigated for the village.

Key Objectives

- Support the Link Scheme to help those with transport difficulties
- Investigate public internet services, in conjunction with the Countryside Agency
- Liaise with village retail outlets to see how their businesses can be further supported and developed



Teamwork at Cheverell's Jubilee celebrations

ENVIRONMENT

Recycling and environmental issues produced the strongest message received from residents via the questionnaire, with 94% considering these matters very important, or important.

Currently Holy Trinity School has a newspaper collection bin.



People want to recycle

Who would use a community compost facility?

Half the people questioned would use a community composting facility if this was available.

The village needs either a community composting facility to which people could take their green waste, or pick up points for green waste to be collected on a regular basis. There has been an initial discussion about the possibility of developing a composting scheme in conjunction with Erlestoke Prison, and the Prison is also looking to develop its own recycling. Green Waste wheelie bins are shortly to be supplied to Great Cheverell residents who have applied for them.

Is dog fouling a problem in the village?



43% of villagers think dog fouling is a problem, with the highest level of concern being from residents of Church Lane, Hill Corner, Garston and Townsend.

Signs detailing the possible fines for allowing dog fouling are displayed in the village.

Dog owners must be encouraged to use poop scoops. Disposal bags are available free of charge from the shop or the Parish Clerk.

Consider ways of reducing tolerance of this problem.

The Research Findings

Would people be interested in learning more about energy efficiency?



A significant minority of Great Cheverell residents (37%), particularly those in the 25 – 44 age group, wanted to know more about energy efficiency.



Appropriate authorities should be consulted, and if possible attend an information session in the village.

Information should be given on the village website, and made available through information packs from the relevant authorities.

The village school could be involved, with information being provided to support learning and awareness.

What environmental activities do people most want?

From a list of 6 options, the most popular was to continue having village skips for household rubbish (67%) followed by 47% wanting garden waste skips.

38% of people would support a litter pick up day, and 33 % a village spring clean day. The preferred dates for these were non bank holiday weekends in May. 32% would be interested in a plant exchange day for gardeners.

The Parish Council should continue to organise skips and days devoted to the improvement of the village.

If a Garden Club is successfully started they could be asked to run a plant swap day.

Key Objectives

- A village composting facility
- Encouragement of greater responsibility by dog owners to reduce fouling, and greater enforcement of bylaws.
- Dissemination of energy efficiency information
- An annual village clean up in May

EMPLOYMENT

While unemployment is not a large problem the closure of Compass in December 2005 has reduced the numbers employed in the village, and this also affects the number of transactions through the Post Office and other knock-on effects. Sole traders living and working from home in the village are somewhat invisible, and might appreciate networking opportunities.

Should the Parish Plan encourage employment within the village?

Half the respondents felt that if possible the Parish Plan should help to encourage more employment within Great Cheverell.

Possible workspaces should be identified.

Existing employers should be encouraged to advertise vacancies locally, including via the village website.

Did people want to set up their own businesses, and how could the Parish Plan help?

7% of respondents, which equals around 15 individuals, were interested in setting up businesses. They wanted help with training and finding suitable workspaces. People also felt that there was a need to raise awareness of existing companies and to support local producers and services.

Assistance should be sought from the Wiltshire Education Authority, Wiltshire College and the Learning Skills Council for activities such as the visiting computer training that was run in the village in 2002.

The Great Cheverell website and News and Views can be used to raise awareness of local enterprises.

Do you want to work from home, and could the Parish Plan help?

29% of respondents would like to work from home, but the majority did not think the Parish Plan could be instrumental in bringing this about. Of those who felt there was scope for the Plan to help, childcare, training and the provision of community office equipment were what was wanted.

The District Council, Pre-school at Holy Trinity School and The Old School Nursery could be asked about the feasibility of organising a local crèche.

Key Objectives

- Identify potential workspaces
- Bring training to the village
- Promote available childcare services

The Research Findings

CRIME & SECURITY

Crime is not a great problem in Great Cheverell.

The village has a local police officer who liaises with the Parish Council, has established links with the village and gives support in reducing antisocial behaviour.

The major concern amongst villagers is vandalism.

Do you feel unsafe at home or in the community?

82% of the respondents did feel safe, with only 17% sometimes feeling unsafe, these largely being from the under 24 age group.



Support is required from Wiltshire County Council to provide youth activities in the village to occupy the bored and prevent disenchanted young people from causing trouble. An attempt to set this up in 2005 failed due to lack of available staff at WCC.



Are you aware of a neighbourhood watch scheme in Great Cheverell, and would you be prepared to help?

69% of the population were aware of the scheme, and 35% indicated they were willing to help out with the scheme.

A Crime and Safety event is scheduled to be organised by the Parish Council, in conjunction with Wiltshire Police and Wiltshire Fire Brigade in 2006

Did residents want free home risk assessments?

There was considerable demand for Home Security, Fire and Home insulation assessments, to be arranged through Wiltshire Police, Bobby Van Trust (BVT), Wiltshire Fire Brigade and Kennet District Council.

Key Objectives

- Attract more volunteers to help with Neighbourhood Watch
- Encourage the provision of youth activities
- Set up free home risk assessments
- Invite BVT to raise awareness of security etc to whole village

HEALTH

Great Cheverell has neither a doctor's surgery nor a pharmacy, although prescriptions can be dispensed from Market Lavington pharmacy and delivered to Cheverell Stores.



Do residents have problems getting to health and social care appointments?

A small percentage (7%) of respondents did find it difficult to get to doctors, dentists etc, these being people of retirement age, many living alone.

Would people like a service whereby local residents would drive them to appointments, or would they be prepared to volunteer to do the driving?

A massive 79% would like such a service, far outstripping the 7% who actually find it difficult to get to appointments. 16% of respondents also would be prepared to drive people to appointments.

On the strength of the above responses, Cheverell certainly could muster sufficient volunteer drivers to take the 7% who have real problems getting to appointments, and development of the Link scheme should be a viable prospect, with the service offered to as many villagers as possible. The potential drivers need to be identified and approached, and a Link Co ordinator appointed.

Are there people in the village who care for someone unable to manage on a day to day basis without help?

9% of respondents were carers. There is a need both to support these individuals, and to inform those who may need support or care in the future what resources are available, and how to access them.

Set up a Community Care Information Point (CCIP) in the village, or via GPs' surgeries used by residents

Are carers aware of support available?

Most carers were aware of support available, although additional information could be supplied at a Community Care Information Point (CCIP), from GP surgeries, Social Services, Age Concern and Kennet Carers based in Pewsey

Key Objectives

- Recruit local volunteer drivers, in consultation with Devizes or other Link schemes
- Set up a CCIP

The Research Findings

PLANNING

Retaining the character of the village is very important to most residents, and there is some concern about existing and potential new developments spoiling this, although it is only by building new houses the other major problem – providing enough housing for young people - can be addressed.



Weavers Mead

In addition to concerns about housing, feedback from villagers through the Village Appraisal and Witchcombe Lane and Weavers Mead consultation processes indicate a concern about insufficient planning for new jobs for local people in the village.

Kennet District Council are responsible for planning, and they consult the Parish Council when applications are made, and are obliged to have regard for Parish Council comments.



Sympathetic new buildings in keeping with local architecture are well received

There is strong resistance to expansion of the village, and big developments. Extensions to existing buildings and any new housing within the village boundaries should complement neighbouring buildings.

Key Objectives

- The Parish Council to consult on major planning issues where possible
- The Parish Council to develop a Village Design Statement to be used as supplementary planning guidance.

YOUNGER RESIDENTS



A project was run in conjunction with Holy Trinity School, inviting pupils to say what they did and didn't like about the village, to ascertain the views of pupils by means of their intranet chat room.

The children's comments included:

It's not too big and everyone is friendly

They shouldn't make it too big

It needs a park where children can play

Great Cheverell is the best village in the world

Even the youngest residents were strident in their demand for a public play area, with swings, as the current equipment does not meet their expectations.



The existing equipment

A playground is planned as part of the new development

The Research Findings

TEENAGERS

After trying to arrange a young person's event with Wiltshire Youth Service, the Steering Group approached young people to organise something that appealed to them.

An outstanding live music evening was held in Holy Trinity School on February 4th 2006 attended by 100 young people (32 from Great Cheverell from a population of approximately 100 11 – 18 year olds). Two excellent local bands provided the entertainment, Metal Militia and Adrenaline. The musicians were between the ages of 14 and 17 years, and worked extremely hard playing as well as making, selling and distributing tickets.



Adrenaline



Metal Militia

What do 11-18 year olds have to say?

Attendees from Great Cheverell completed a questionnaire, which indicated that they came from all areas of the village with most living in Victoria Park and Weavers Mead. The majority (68%) enjoyed living here. However, only 30% thought they would be able to live here as adults, even though half would like to. Barriers such as expensive housing, lack of facilities, few jobs and lack of transport were seen as the reasons they would be more likely to move away. This reflects views found elsewhere in the plan voiced by adults.

The lack of activities geared towards young people was reported by everyone. There was a general move away from traditional organisations such as a youth club, scouts and guides. Everyone wanted somewhere they could meet up with friends. This included events similar to the party arranged by the Steering Group and access to a community centre or a place to meet that provided flexibility for a range of activities. They agreed with the younger children that a park with suitable equipment and activities would be welcomed.

Key Objectives

- Endeavour to form a Young People's Group, involving young people with adult support.
- Encourage young people to organise events in the village.
- Involve young people in the design and development of the play area.

HOW WE WILL ACHIEVE WHAT WE WANT

This Parish Plan is largely a document to assist the Parish Council to reflect the views of the residents over matters such as planning, road safety etc.

In addition, a number of the actions that the population would like to see can be developed in conjunction with other bodies, such as the District and County Councils, the Link organisation, Rural Arts Wiltshire, charities, the police and the Highways Agency.

However, first and foremost the people who will make all these things happen are

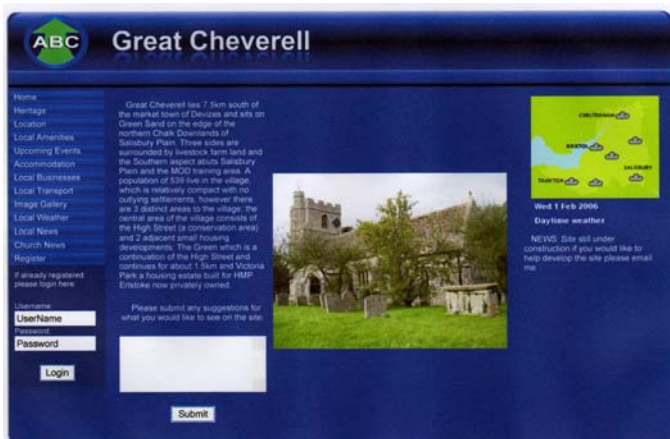
the people of Great Cheverell.

The Parish Plan Steering Group have proved that there are people prepared to volunteer their services for the good of the community, and many members of the Group are prepared to progress aspects of The Plan through Action Groups. Other villagers will be invited to join groups that deal with their particular interest or concern – there is no need for a huge commitment in terms of time and effort, but every little helps,

THE GREAT CHEVERELL WEBSITE

Support for this village asset will bring multiple benefits.

People surf the net looking for their ancestors, somewhere to have lunch, or holiday accommodation. If they find the Great Cheverell site and it is interesting and appealing they are likely to come here and bring in revenue.



www.greatcheverell.org.uk

It will be able to provide up to date information on events in the village, and thus help foster community spirit.

It will give local businesses and sole traders an opportunity to promote their enterprises, or by adding a link to the site from their own websites can supply information about where they are located.

Pauline Jenkinson, whose son Paul did the original design of the website, is prepared to spearhead a **Website Action Group**, aimed at keeping the site up to date but needs assistance or at least advice on the technical side such as acting as webmaster

LEISURE, RECREATION AND CULTURE

It is not part of the role of a Parish Council to run a village social committee, and it would be unreasonable to expect Councillors to undertake this work in addition to their other duties. It is therefore proposed that a **Social Committee** be formed to run events and the new Community Centre.



In response to the questionnaire, **Rural Arts Wiltshire** have offered Great Cheverell the opportunity to host a musical event, which is to take place on 1st April 2006 at the School Hall. RAW publicise this within the county, but expect assistance locally to sell tickets and display posters. **Rosalind Ambler** has undertaken to act as official **Promoter** of this, and other Steering Group members have volunteered to run the bar, accommodate the artistes and assist generally.

If this is a success, RAW can be applied to in future for more events. The choice of productions is very varied, so people with different tastes to those of the current promoter are very welcome to get involved, apply for and promote an event of their choosing.

People also wanted **concerts in the church**, and any resident who knows of suitable performer(s) is invited to approach the Social Committee for help in putting on such an event, or simply approach one of the churchwardens to hire the church.



There is already considerable interest in a **gardening club and more keep fit**.



Image: www.freeimages.co.uk

Debbie Deimert and **Pauline Jenkinson** will arrange a meeting for people interested in a **Gardening Club** but it will be up to potential club members to decide what type of club they would like.

Yoga classes are now run at the School, in addition to the **Aiki** in the Village Hall.

Two **book clubs** are in the process of being set up.

COMMUNITY FACILITIES

The proposed **Community Centre** will be a welcome facility for the village, and it is the responsibility of the Parish Council to continue to press for this, and to keep residents informed about progress or lack of it.

The **licencees of the Bell** are keen to utilise the skittle alley, and have publicised this by means of posters.

The **Village Hall** may be hired, and is ideal for functions such as children's parties.



The church is ideal for a concert

To hire the **Church** an approach should be made to one of the churchwardens.

A system needs to be established whereby all information is kept up to date and issued to new residents in the pack that is produced by the **Parish Council**, and for all events to be featured on the **website**.

LINK SCHEME



Link users from Seend

It would be very beneficial to the village if the **Link scheme** could be developed, as some 72 requests have been made to Link over the past year. Some funding would be required for this. As villagers have supported the two Parish Plan events, and enjoyed a quiz set at one, there is a strong case for running more activities both to raise funds and to help create community spirit.

Further guidance is required from Devizes Link on what is required to develop this service.

Anna Spear is prepared to facilitate this in conjunction with someone else from the village – volunteers are required to enable this scheme to progress further.

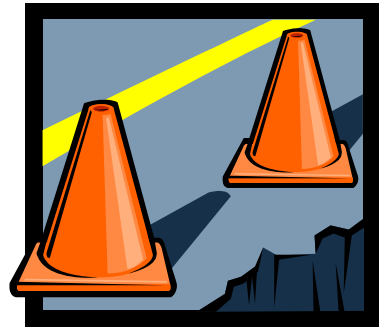
CCIP

A **Community Care Information Point** should be created in the new Community Centre, and the notice board used in the meantime to keep villagers informed of facilities available.

TRANSPORT, TRAFFIC, ROADS AND FOOTPATHS

There is clearly a need for a better system for reporting roadways in a poor state of repair. At present there is, without doubt, an assumption that someone else has called the council, which can lead to no action being taken.

One course of action could be to publicise methods of reaching parish councillors in addition to the notice board outside the shop. The website could be used for this, and to report back to villagers what the response has been from the Highways Agency, or forms could be produced for those reporting problems.



As there are a great many individuals who feel extremely strongly about traffic speed and lorries using the High Street their participation in a **Traffic Action Group** is to be encouraged. The Parish Council enjoys a good relationship with the Highways Agency, and is happy to put forward recommendations from the Traffic Action Group.

Interest has been expressed from one parishioner, **David Hill**, to join this group, and provisionally **Louise George** has undertaken to work on setting up a **Traffic Action Group**.

Wiltshire County Council will shortly sign off a new HGV Route which should reduce numbers of High Sided Vehicles through the village, and monitoring this will be one of the tasks undertaken by the **Traffic Action Group**.

RETAIL SERVICES

There may be the possibility to take advantage of a proposed initiative from the Countryside Agency to set up public internet access.

Cheverell Stores currently make deliveries to people who are housebound, and would consider expanding this to other customers for either a charge, or for orders over a minimum value.

ENVIRONMENT

Parish Clerk **Hazel Simons** has undertaken to be Cheverell's Chief Composter, and will continue to investigate the best methods for a community scheme.

The Parish Council are liaising with Warm Hearted Homes, the Energy Efficiency Advice Centre for Swindon and Wiltshire (EEAC) with a view to providing information on energy saving. Talks are also taking place with Erlestoke Prison on joint activities.

Hazel is an expert composter, with no fewer than four bins in her own garden!



CRIME



More volunteers are required for **Neighbourhood watch**, interested parties please contact **Lynda Wearn**

The availability of Home Security, Fire and Home insulation assessments needs to be publicised and offered to all residents, possibly through a **Crime and Safety Event** organised by the **Parish Council** and **Bobby Van Trust**.

The Parish Council would be pro active in encouraging a **Neighbourhood Policing Team** to cover the village.

EMPLOYMENT

The **Parish Council** is urged to continue to make every effort to bring employment to the village.

Crèche facilities, using trained staff who live locally, are available via a 'mobile' service that can be booked for one off events or on a regular basis.



Cheverell Magna Parish Council will support the implementaton of this Plan.

INFORMATION AND CONTACTS

Cheverell Stores/Post Office	Ian and Linda Smith	01380 813303
Cheverell Traffic Action Group	Louise George	01380 816228
Cheverell Website	Pauline Jenkinson	01380 813775
Churchwardens	Terry Froud	01380 812634
	Wendy Wilshin	01380 813735
'Clarence' to report lighting and road defects and hazards		0800 23 23 23
Composting	Hazel Simons	01380 813207
Devizes Link – bookings		01380 721775
Devizes Link – to volunteer please call	Anna Spear	01380 812075
Here and There Creche	Sam Abbott	01722 505552
Holy Trinity School		01380 813796
Kennet Carers		01672 564265
Neighbourhood Watch	Lynda Wearn	01380 813911
Network Rail helpline		08457 11 41 41
Parish Clerk	Hazel Simons	01380 813207
Police – non emergency number		0845 408 7000
Rural Arts Wiltshire GC Events	Rosalind Ambler	01380 818657
The Bell	Gill and Sara Currie	01380 813277
Village Hall – bookings	Wendy Wilshin	01380 813735
Voluntary Action Kennet – support for families		01672 564140



Cheverell at play – the Jubilee celebrations

The Steering Group would like to thank:

Adrenaline and Metal Militia for music at the youth party

All the villagers who helped with catering and raffle prizes for the two Parish Parties held during the compilation of this report

Everyone from Great Cheverell who completed questionnaires and attended the functions.

Fraser Hooper for clowning services

Hazel Simons for the loan of her picture of old Cheverell

Helen Beattie of Duquant Research for compiling and analysis of the questionnaire

Holy Trinity School for use of the School Hall

Linda and Ian Smith of Cheverell Stores for supply of wine for the two functions, and photography

Luke Mackay-Morris for designing the ABC logo

Marion Rayner of Community First

Paul Jenkinson for designing the Great Cheverell website

Rosalind Ambler for preparing the Plan document

The Bell for use of the skittle alley for meetings

The Steering Group have a long list of thanks in connection with the party held for teenagers, especially to the young people who were enthusiastic, energetic, respectful and so much fun. Special thanks must go to Tom Walsh and Alex Shere, (both musicians in the bands) for their outstanding contribution to the evening, and to the adult helpers who maintained a discreet but effective presence.

And finally – anyone who having read this document is prepared to play a role in achieving

A BETTER CHEVERELL.

